

BACK-UP PLATES

NOTE: All Back-Up Plates come with two Tinnerman Nuts unless otherwise indicated.



SF-395
Flanged Back-Up Plate
for Metal Inlets
(Use with AF-210 A or B)



SF-297
Concrete or Tile Wall
Back-Up Plate for Metal
Inlets



SF-380-8
Masonary Back-Up
Plate for Metal Inlets



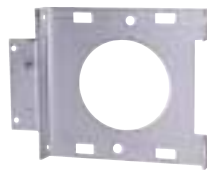
SF-297-8
Back-up Plate & Box for
Masonry Walls and
metal inlets



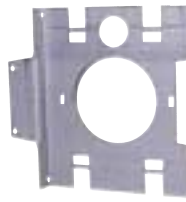
SF-250-7
Metal Box side for use
with SF-295 and SF-290
when an electrical enclosure
is required.



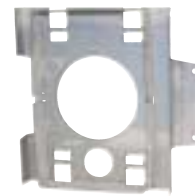
SF-270
Industrial Back-Up Plate
for Metal Inlets



SF-290
Metal Flanged Back-up
Plate for metal inlets



SF-295
Back-up Plate with
Knock-Out for metal inlets



SF-295-8
Combination SF-250-7
and SF-295

2" STEEL FITTINGS, 2" ALUMINUM FITTINGS AND MISCELLANEOUS



RTV-732
Silicon Adhesive for
Steel Fittings



SF-202A
Steel Slip Coupler
and Bushing for 3 x 2
Steel Fittings



SF-207
2" O.D. Steel Tubing
8' Length only



SF-207-6
6" Length Steel
Tubing for Firewalls



SF-213
90 Degree Steel
Sweep Ell



55554
Gasket for 4-Hole
Fittings



AF-210B
Aluminum 90° Flanged
Ell with screws and
gasket for 1-1/2" Inlets



AF-210A
Aluminum 90°
Flanged Ell with
screws and gasket for
1-1/4" Inlets



SF-214
45 Degree Steel TY



SF-215
90 Degree Steel
TY



SF-216
45 Degree Steel
Ell



SS-200
Heat Shrink Sleeve
for 2" Metal Tubing

TC-161
Tubing Cutter
C-Shape
TC-1624
Blade for TC-161



TC-261
Plastic Handle
Tubing Cutter
TC-2641
Blade for TC-261



VG-160
Vacuum Gauge

